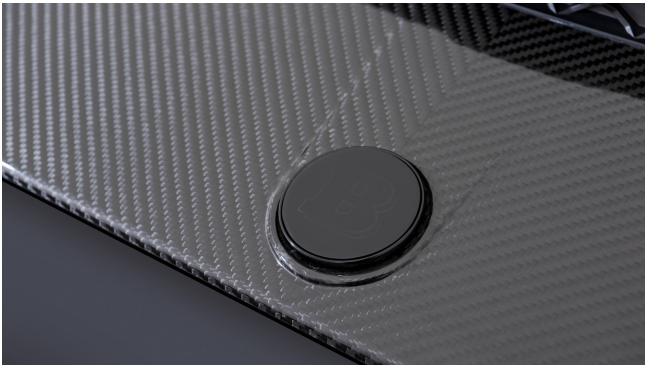


## BRABUS 800 "BLACK OPS" - LIMITED EDITION "1 OF 10" - MERCEDES-AMG G 63



Power 588 kW / 800 PS | Torque 1000 Nm | 0-100 km/h 4,2 s | Vmax 240 km/h / 149 mph  
Fuel Economy\* city 16,5 l/100km | highway 11,1 l/100km | combined 13,1 l/100km | CO<sub>2</sub> 299 g/km

















# STANDARD FEATURES

## DESIGN & EXTERIOR

---

Painting: Obsidian black - metallic

---

AMG Line Exterieur

---

Stainless steel package

---

Night-package

---

## POWER & SOUND

---

Fuel tank with increased capacity of 100l

---

AMG Driver's Package

---

AMG performance exhaust system

---

## INTERIOR

---

AMG Performance steering wheel

---

Burmester Surround-Soundsystem

---

Sunroof

---

Widescreen Cockpit

---

parking heater

---

ambient lighting

---

Exklusive Interieur

---

Active-Multicontour seat-package

---

TV-Tuner

---

COMAND Online

---

Parking-package with 360° camera

---

MULTIBEAM LED

---

## WHEELS & CHASSIS

---

AMG Ride Control

---

AMG LM-tires in double-spoke-design black

---

AMG brake calipers painted in red

---

## DESIGN & EXTERIOR

---

BRABUS WIDESTAR consisting of: front skirt with design override element, rear skirt with design override element, front and rear fender flares (front with integrated LED-illumination)

---

BRABUS carbon add-on parts for WIDESTAR

---

BRABUS carbon powerdome glossy

---

BRABUS carbon radiator grill attachment

---

BRABUS carbon roof attachment with LED beam lights

---

BRABUS emblem for radiator grille illuminated

---

BRABUS roof top spoiler with carbon add-ons

---

BRABUS double-B insert for front grille

---

## INTERIOR

---

BRABUS "BLACK OPS" fine leather interior

---

colour: black/anthracite, with red stitching and special quilting.

---

Interior decorative parts in Piano-wood high glossy black

---

Interior decorative parts in genuine carbon (10-pcs.)

---

BRABUS roof unit in rear

---

BRABUS speedometer 300 km/h

---

BRABUS carbon entrance panels in RGD-LED-technology

---

BRABUS carbon entrance panel trunk door

---

BRABUS aluminium pedal pads

---



---

BRABUS carbon spare wheel cover glossy

---

BRABUS complete two-tone-repainting in glossy black

---

BRABUS special painting of all exterior Chrome- and plastic parts

---

## POWER & SOUND

---

BRABUS engine upgrade PowerXtra B40S-800

Power: 588 kW (800 hp ) - series: 430 kW (585 hp)

Torque: 1.000 Nm at 6.600 r/min.

---

BRABUS valve-controlled sports exhaust system

---

---

BRABUS door-lock pins

---

Floor mats in quilted leather

---

Boot floor mat in quilted leather

---

BRABUS additional limiting strap for rear doors' aperture of 90°

---

BRABUS weekender with trolley-function

in BRABUS "BLACK OPS Style" fine leather

---

## WHEELS & CHASSIS

---

BRABUS Monoblock F "Black Platinum"

11J x 23 H2 cross-spoke-design

---

Tires 305/35 ZR 23 (V105) 111Y XL Yokohama Advan Sport

---

BRABUS brake design

---

# BRABUS 800 "BLACK OPS" - LIMITED EDITION

## "1 OF 10"

## ONLY TEN VEHICLES WORLDWIDE



# PERFORMANCE & FUEL ECONOMY

## TECHNICAL DATA

Engine	8-Cylinder
Power	588 kW / 800 PS
Mileage	0 km
0-100 km/h	4,2 s
Vmax	240 km/h / 149 mph

## FUEL ECONOMY

city	16,5 l/100km
highway	11,1 l/100km
combined	13,1 l/100km
CO <sub>2</sub> Emissions	299 g/km

## PRICE

Gross	336.252,35 EUR
Net	282.565,00 EUR



**EXPOSE DOWNLOAD**



## NOTICES

\*All listed performance figures are approximate values. They depend on vehicle-specific details such as the vehicle type, equipment, tare weight, rear-axle ratio, wheel-tire combinations, transmission type and aerodynamic equipment of the specific car. Figures about performance increases and/or performance kits are to be understood as average values. Test-dependent divergences of +/- 5% are possible. Figures about the overall performance of changed factory engines through performance increases and/or performance kits are based on the manufacturer's data listed in the vehicle registration document. They can vary by +/- 5%. BRABUS does not warrant any further reduced performance of factory engines. Specifications are subject to change without prior notice. These values were determined using the prescribed measurement procedure (directive 80/1268/EEC in its currently valid version). The details are not based on a single vehicle, and do not form a component of the offer, but serve only for purposes of comparison between different vehicle types.

\*\*All prices are quoted ex works.

## EFFICIENCY & FUEL ECONOMY

---

Fuel Economy\*

---

city 16,5 l/100km

---

highway 11,1 l/100km

---

combined 13,1 l/100km

---

CO<sub>2</sub> 299 g/km

---

## CO<sub>2</sub>-EFFICIENCY\*



\* Determined based on the measured CO<sub>2</sub> emissions in consideration of the vehicle mass.

# VIELEN DANK FÜR IHR INTERESSE KONTAKTIEREN SIE UNS!

## **BRABUS GmbH**

Brabus-Allee  
D-46240 Bottrop, Germany  
Telefon: +49 20 41 777-0  
Telefax: +49 2041 / 777-11  
eMail: [info@brabus.com](mailto:info@brabus.com)

AG Gelsenkirchen  
HRB 5286  
GF/CEO Constantin Buschmann

## **BRABUS FlagshipStore KÖ90**

Königsallee 90  
40212 Düsseldorf, Germany  
Telefon: +49 211 210916-00

---

Dieses Fahrzeug online ansehen:

